



# THE OAKS

— AT SCHMITT FARMS —

# LOTS FOR SALE

## The Oaks at Schmitt Farms

*Elmwood Road  
Village of Richfield*



- *1.25+ Acre Lots*
- *Private Well and Septic Required*
- *All Utilities to Lot Line/Right of Way*
- *Minimum Home Size*
  - *Ranch: 2,000 square feet*
  - *Two-Story: 2,300 square feet*
- *Outbuildings Permitted*

Build your dream home on the historic grounds of the Oliver J. Schmitt family farm. The Oaks at Schmitt Farms offers 1.25+ acre homesites with rolling topography, many suited for basement exposures. Phase 1 features 25 lots, with 53 total in the community.

Enjoy the freedom to choose your own builder, plus the quality of curb and gutter improvements and plentiful open space. Located in a serene rural setting, yet minutes from Kettle Moraine State Forest, Richfield Historical Park, Holy Hill Basilica, Holy Hill Art Farm, and Peck & Bushel Organic Fruit Company, this community blends country charm with easy access to modern amenities.

Create your future where tradition meets opportunity at The Oaks at Schmitt Farms.



**(262) 251-3700**



[RealEstate@JBJCompanies.com](mailto:RealEstate@JBJCompanies.com)



[JBJCompanies.com](http://JBJCompanies.com)

*All Builders  
Welcome!*

*Exclusive Home Sites Designed With You In Mind*



# THE OAKS

— AT SCHMITT FARMS —

**JB**  
Companies, Inc.



**(262) 251-3700**



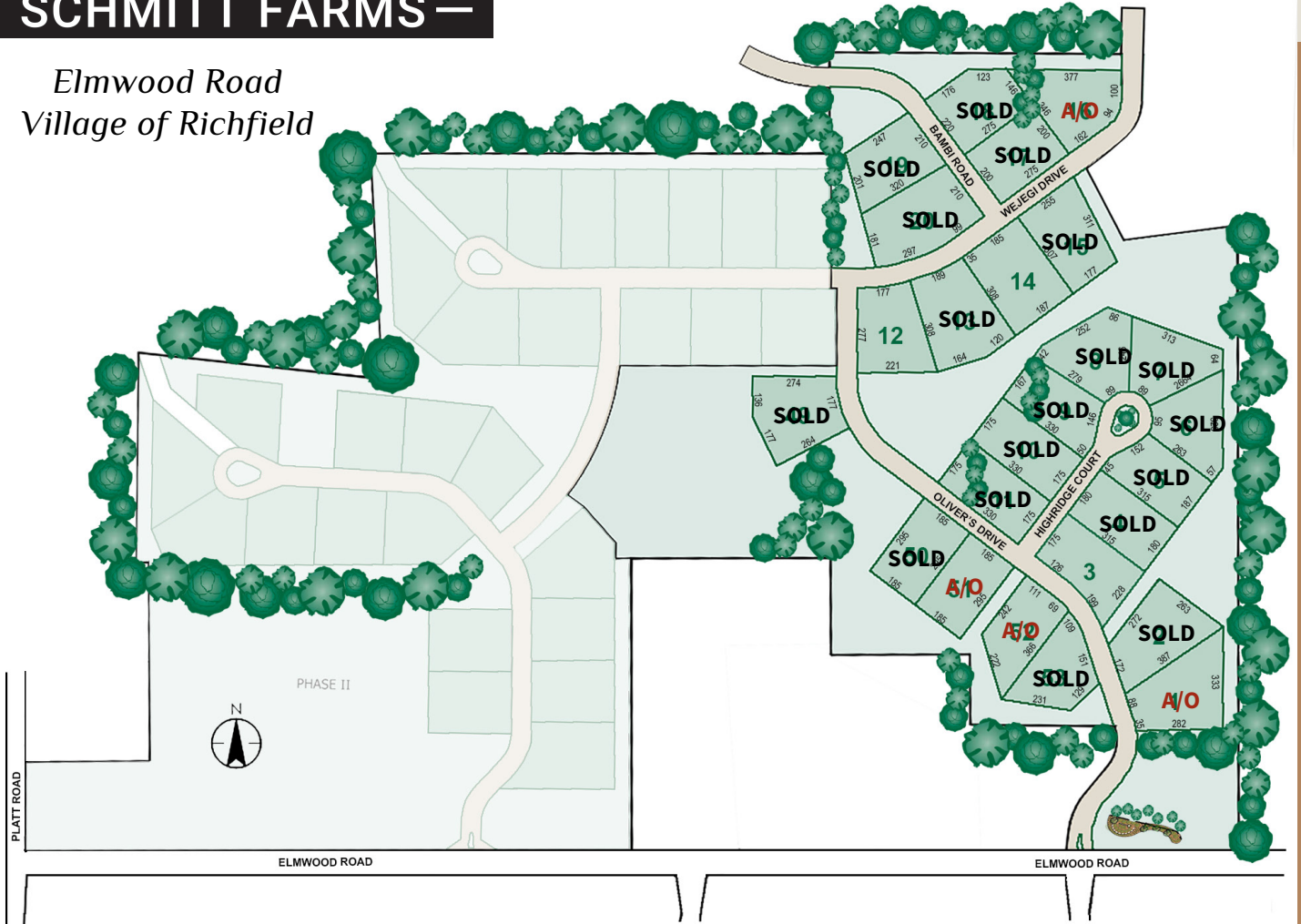
[RealEstate@JBCompanies.com](mailto:RealEstate@JBCompanies.com)



[JBCompanies.com](http://JBCompanies.com)

*Exclusive Home Sites Designed With You In Mind*

*Elmwood Road  
Village of Richfield*



Updated 4-17-2026

Lot #	Price
1	Accepted Offer
2	Sold
3	\$169,900
4	Sold
5	Sold
6	Sold
7	Sold
8	Sold
9	Sold

Lot #	Price
10	Sold
11	Sold
12	\$169,900*
13	Sold
14	\$174,900*
15	Sold
16	Accepted Offer
17	Sold

Lot #	Price
18	Sold
19	Sold
20	Sold
49	Sold
50	Sold
51	Accepted Offer
52	Accepted Offer
53	Sold

*\*Potential lot exposure to be verified by buyer/builder.*

*Information is deemed to be accurate and is subject to change without notice.*