



THE OAKS

— AT SCHMITT FARMS —

LOTS FOR SALE

The Oaks at Schmitt Farms

*Elmwood Road
Village of Richfield*



- 1.25+ Acre Lots
- Private Well and Septic Required
- All Utilities to Lot Line/Right of Way
- Minimum Home Size
 - Ranch: 2,000 square feet
 - Two-Story: 2,300 square feet
- Outbuildings Permitted

Build your dream home on the historic grounds of the Oliver J. Schmitt family farm. The Oaks at Schmitt Farms offers 1.25+ acre homesites with rolling topography, many suited for basement exposures. Phase 1 features 25 lots, with 53 total in the community.

Enjoy the freedom to choose your own builder, plus the quality of curb and gutter improvements and plentiful open space. Located in a serene rural setting, yet minutes from Kettle Moraine State Forest, Richfield Historical Park, Holy Hill Basilica, Holy Hill Art Farm, and Peck & Bushel Organic Fruit Company, this community blends country charm with easy access to modern amenities.

Create your future where tradition meets opportunity at The Oaks at Schmitt Farms.



(262) 251-3700



RealEstate@JBJCompanies.com



JBJCompanies.com

*All Builders
Welcome!*

Exclusive Home Sites Designed With You In Mind



THE OAKS

— AT SCHMITT FARMS —



(262) 251-3700



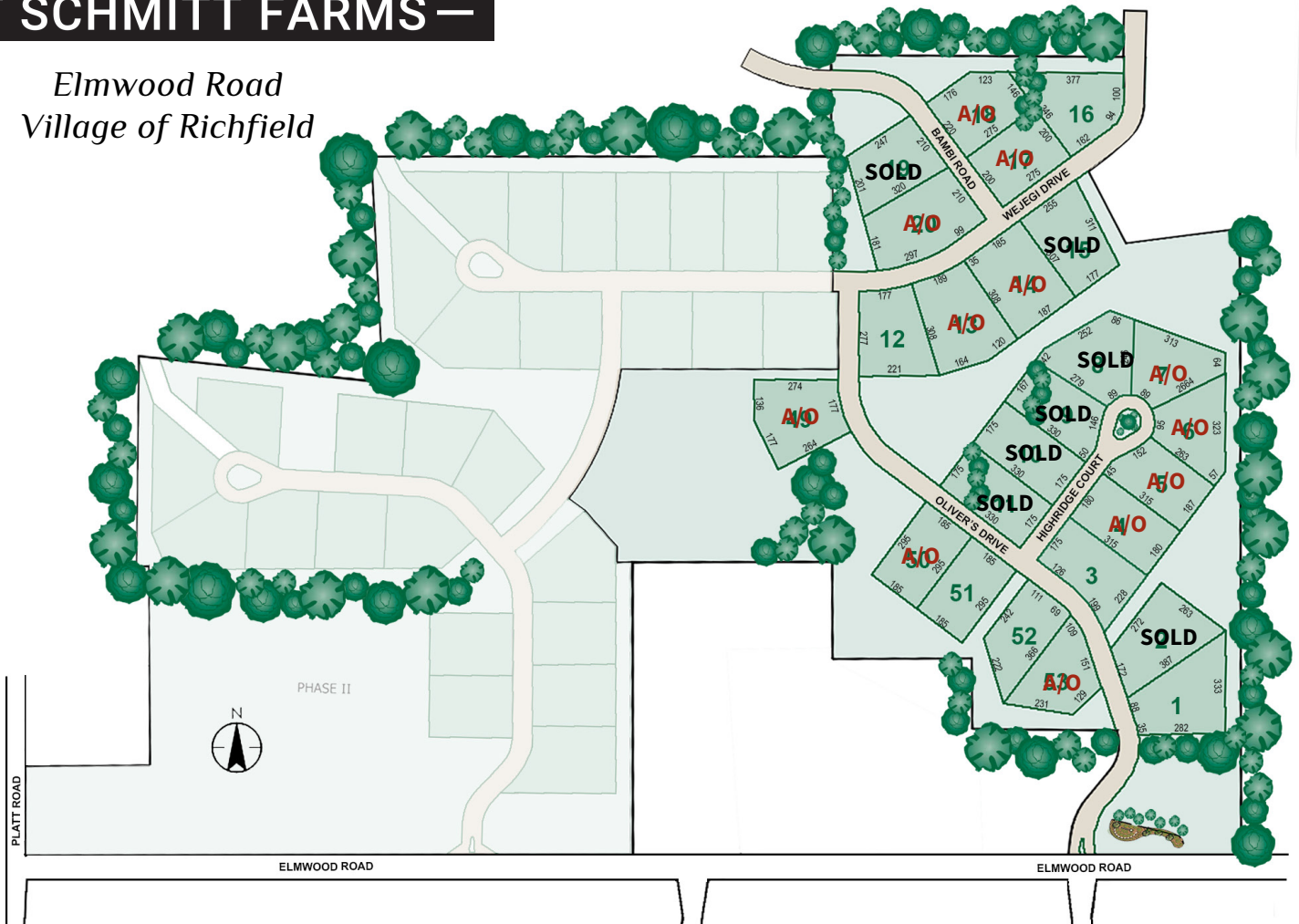
RealEstate@JBJCompanies.com



JBJCompanies.com

Exclusive Home Sites Designed With You In Mind

Elmwood Road
Village of Richfield



Updated 2-2-2026

Lot #	Price
1	\$194,900*
2	Sold
3	\$169,900*
4	Accepted Offer
5	Accepted Offer
6	Accepted Offer
7	Accepted Offer
8	Sold
9	Sold

Lot #	Price
10	Sold
11	Sold
12	\$169,900*
13	Accepted Offer
14	Accepted Offer
15	Sold
16	\$181,900*
17	Accepted Offer

Lot #	Price
18	Accepted Offer
19	Sold
20	Accepted Offer
49	Accepted Offer
50	Accepted Offer
51	\$194,900*
52	\$194,900*
53	Accepted Offer

*Potential lot exposure to be verified by buyer/builder.

Information is deemed to be accurate and is subject to change without notice.