

FOR LEASE

FOUNTAIN SQUARE

W177 N9856 RIVERCREST DRIVE
W177 N9886 RIVERCREST DRIVE
W178 N9912 RIVERCREST DRIVE
GERMANTOWN, WI 53022

FOUNDERS 3
REAL ESTATE SERVICES

Property Highlights

- Immediate Access to I-41/45
- Ample Parking
- Class A Finishes
- 24 Hour Access
- Security Surveillance
- Fiber Optic Voice and Data Availability
- Conference Rooms and Lunch Room
- Outdoor Patio and Eating Areas
- On-Site Management
- Immediate Occupancy Available on some suites

Signage

- I-41/45 Monument Signage
- Rivercrest Drive Entrance Directory
- Digital Display Lobby Signs
- Door/Suite Signage
- Building Channel Lettering

Specifications

AVAILABLE SPACE

Minimum Divisible
Maximum Contiguous
Parking
2026 Est. Cam/RE Taxes
Lease Rate

Building N 9856: 6,390 RSF
Building N 9886: 5,899 RSF
Building N 9912: 269 RSF
Storage Locker #1, #2, #4, & #5

269 RSF
4,018 RSF
5/1,000 SF

\$2.78 PSF / \$1.28 PSF

Market Ready: \$18.00 - \$20.00/SF

Includes all utilities, RE taxes, common area maintenance (lawn care, snow removal, etc.) & parking

Standard:\$14.00/SF NNN

Contact

Jeanine Sweeney
414.477.8511
jsweeney@founders3.com



414.271.1111 | www.founders3.com

Information shown herein was provided by Seller/Lessor and/or third parties and has not been verified by the broker unless otherwise indicated.

Last Updated: 1/23/2026

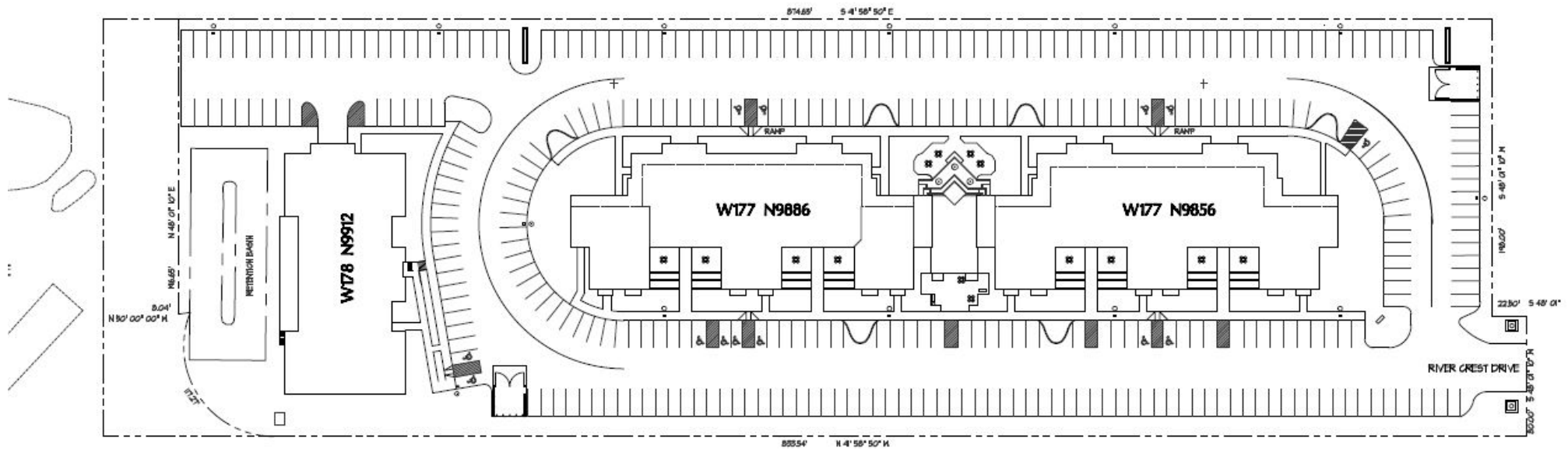
FOR LEASE

FOUNTAIN SQUARE

W177 N9856 RIVERCREST DRIVE
W177 N9886 RIVERCREST DRIVE
W178 N9912 RIVERCREST DRIVE
GERMANTOWN, WI 53022

FOUNDERS **3**
REAL ESTATE SERVICES

| SITE PLAN



414.271.1111 | wwwFOUNDERS3.com

Information shown herein was provided by Seller/Lessor and/or third parties and has not been verified by the broker unless otherwise indicated.

FOR LEASE

FOUNTAIN SQUARE

W177 N9856 RIVERCREST DRIVE
W177 N9886 RIVERCREST DRIVE
W178 N9912 RIVERCREST DRIVE
GERMANTOWN, WI 53022

FOUNDERS **3**
REAL ESTATE SERVICES

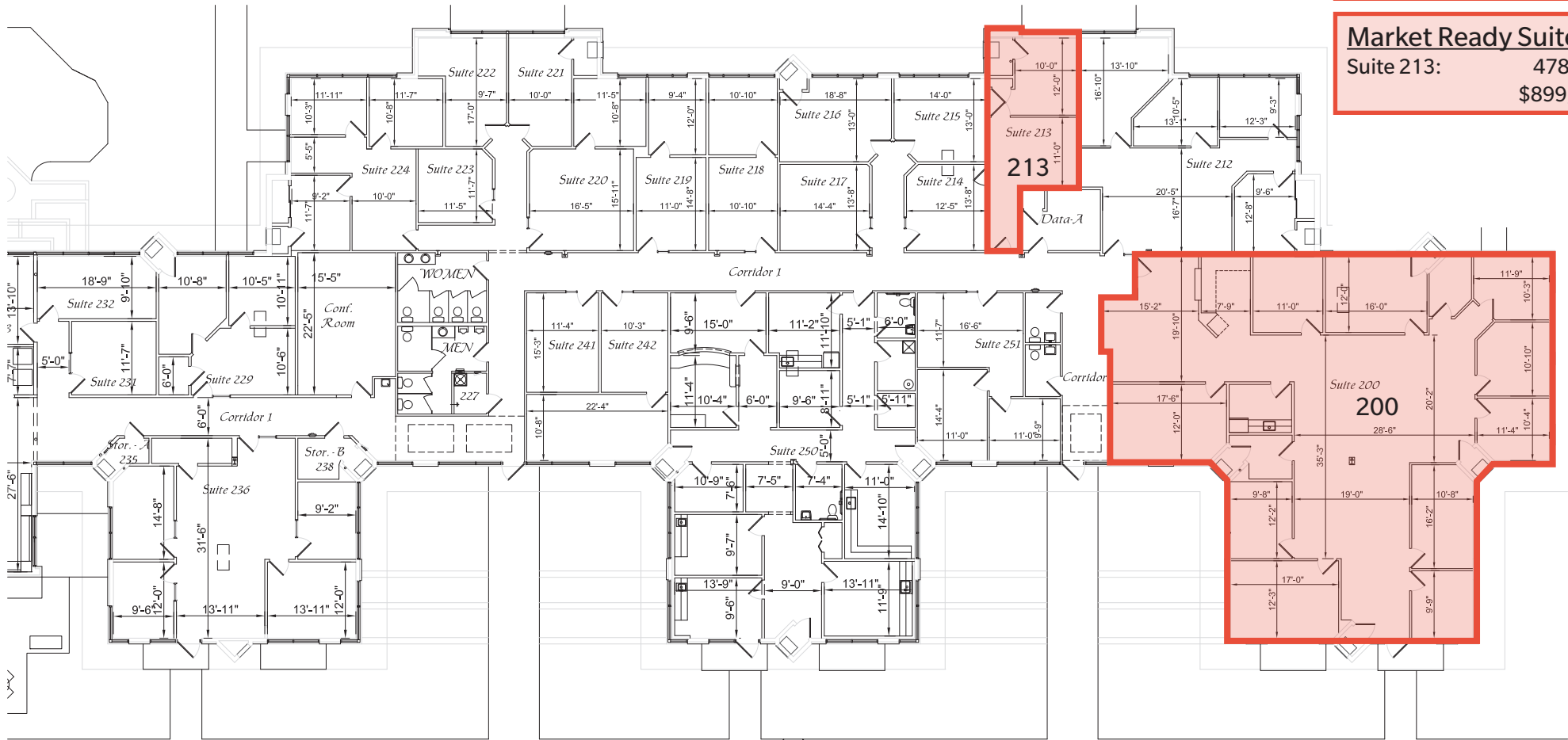
FLOOR PLAN - W177 N9856 RIVERCREST DRIVE UPPER LEVEL

Standard Suite:

Suite 200: 4,018 RSF
\$14.00/SF NNN

Market Ready Suite:

Suite 213: 478 RSF
\$899/mo



414.271.1111 | wwwFOUNDERS3.com

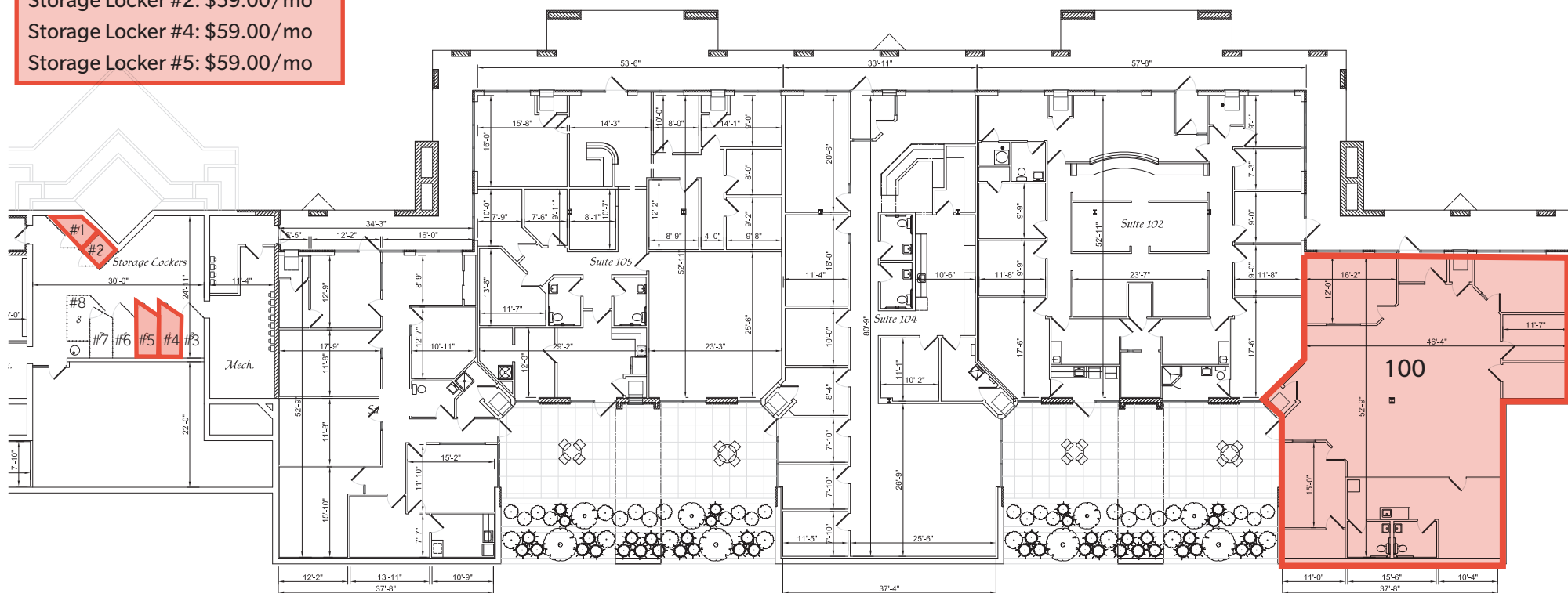
Information shown herein was provided by Seller/Lessor and/or third parties and has not been verified by the broker unless otherwise indicated.

FOUNTAIN SQUARE

FOUNDERS 3
REAL ESTATE SERVICES

Storage Locker #1: \$59.00/mo
Storage Locker #2: \$59.00/mo
Storage Locker #4: \$59.00/mo
Storage Locker #5: \$59.00/mo

Suite 100: 2,434 RSF
\$14.00/SF NNN

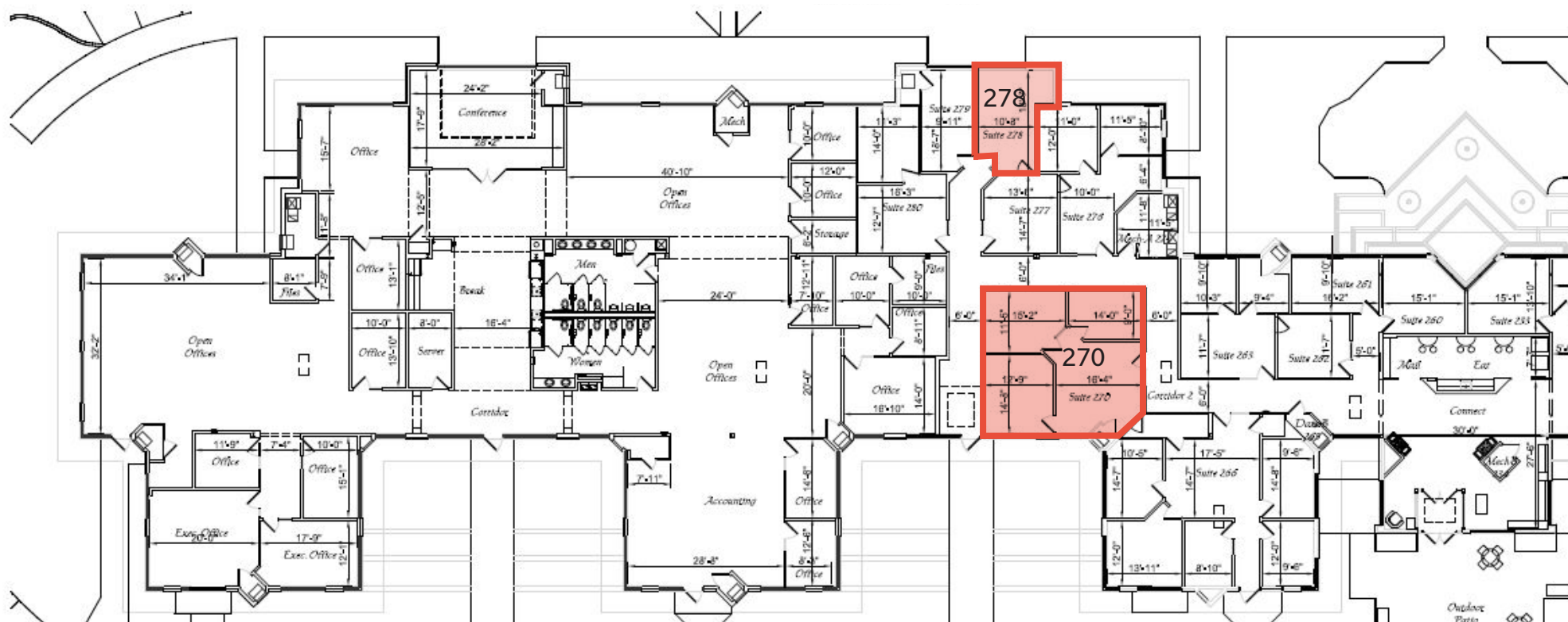


FOUNTAIN SQUARE

FOUNDERS **3**
REAL ESTATE SERVICES

Market Ready Suite:

Suite 278: 293 RSF
\$494/mo



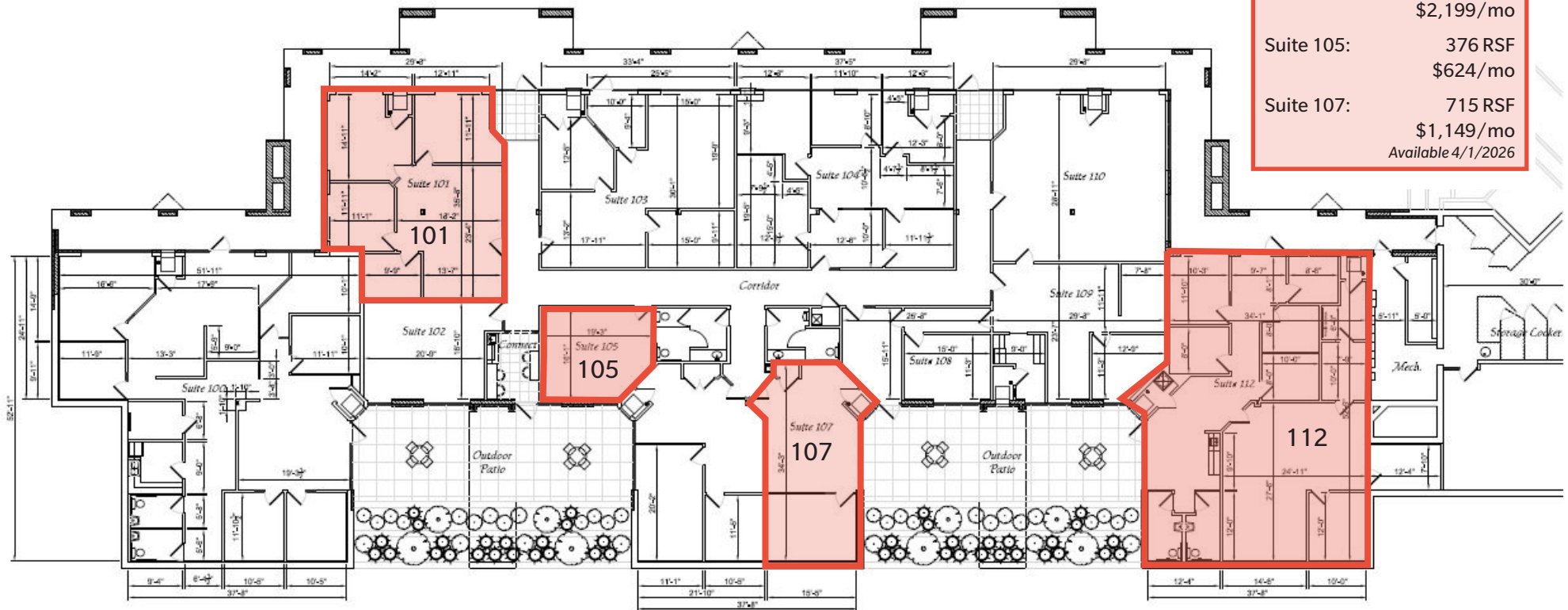
FOR LEASE

FOUNTAIN SQUARE

W177 N9856 RIVERCREST DRIVE
W177 N9886 RIVERCREST DRIVE
W178 N9912 RIVERCREST DRIVE
GERMANTOWN, WI 53022

FOUNDERS 3
REAL ESTATE SERVICES

FLOOR PLAN - W177 N9886 RIVERCREST DRIVE LOWER LEVEL



Standard Suite:

Suite 112: 2,212 RSF
\$14.00/SF NNN

Market Ready Suite:

Suite 101: 1,327 RSF
\$2,199/mo
Suite 105: 376 RSF
\$624/mo
Suite 107: 715 RSF
\$1,149/mo
Available 4/1/2026



414.271.1111 | wwwFOUNDERS3.com

Information shown herein was provided by Seller/Lessor and/or third parties and has not been verified by the broker unless otherwise indicated.

FOR LEASE

FOUNTAIN SQUARE

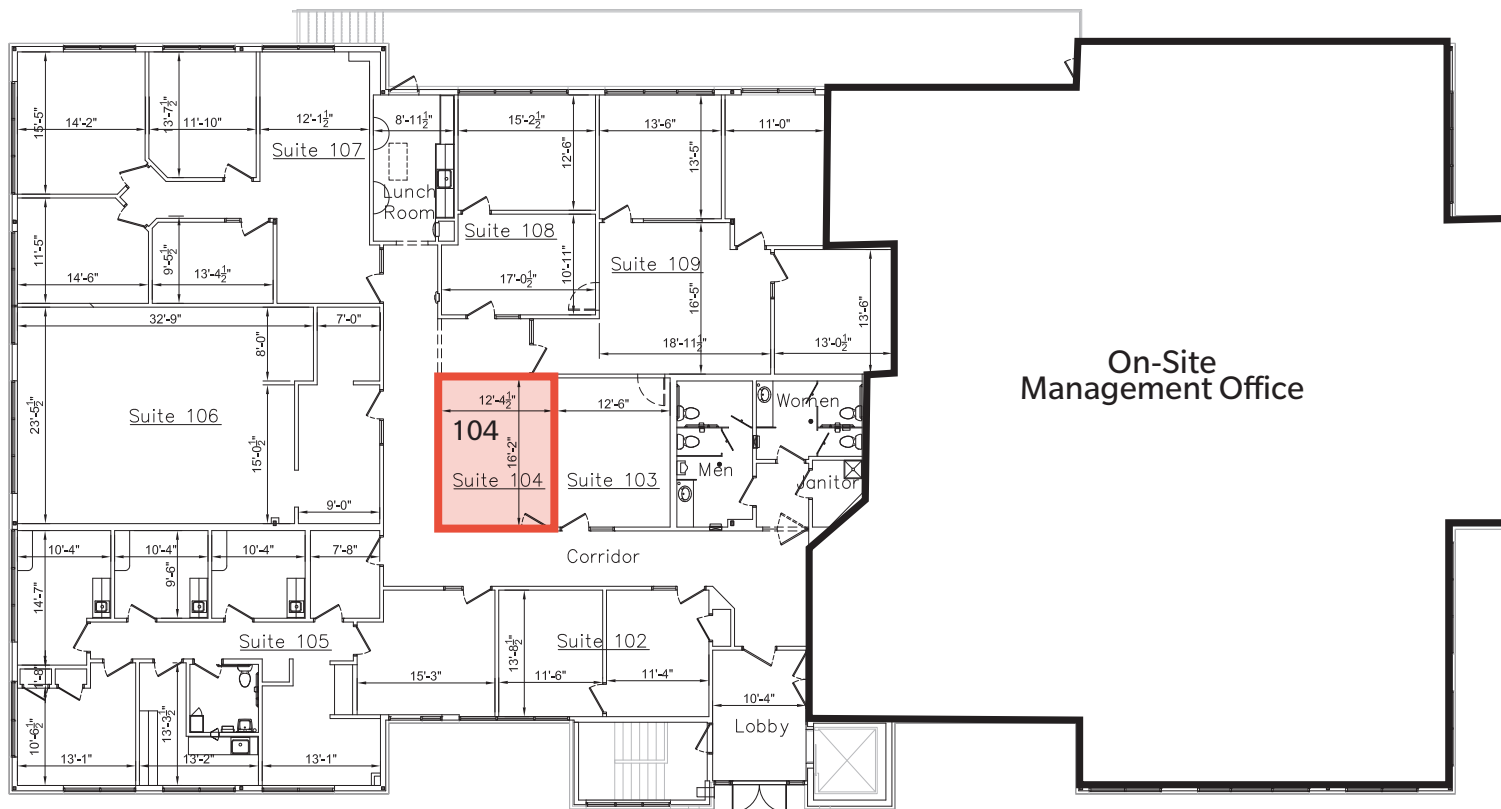
W177 N9856 RIVERCREST DRIVE
W177 N9886 RIVERCREST DRIVE
W178 N9912 RIVERCREST DRIVE
GERMANTOWN, WI 53022



FLOOR PLAN - W178 N9912 RIVERCREST DRIVE

Market Ready Suite:

Suite 104: 269 RSF
\$494/mo
Available 4/1/2026



414.271.1111 | www.founders3.com

Information shown herein was provided by Seller/Lessor and/or third parties and has not been verified by the broker unless otherwise indicated.

FOR LEASE

FOUNTAIN SQUARE

W177 N9856 RIVERCREST DRIVE
W177 N9886 RIVERCREST DRIVE
W178 N9912 RIVERCREST DRIVE
GERMANTOWN, WI 53022

FOUNDERS | **3**
REAL ESTATE SERVICES

| PROPERTY PHOTOS - EXTERIOR



414.271.1111 | wwwFOUNDERS3.com

Information shown herein was provided by Seller/Lessor and/or third parties and has not been verified by the broker unless otherwise indicated.

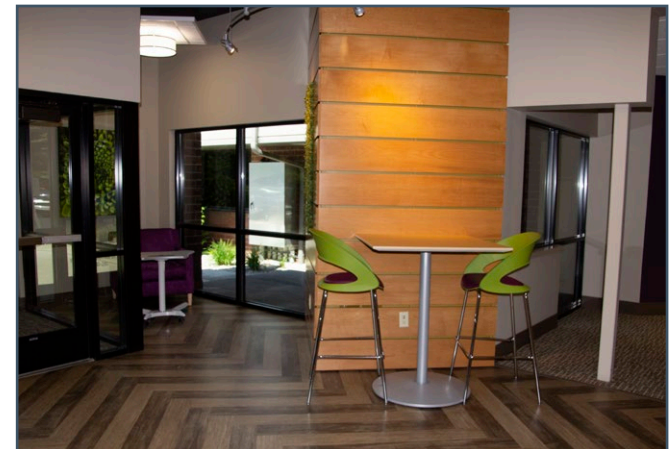
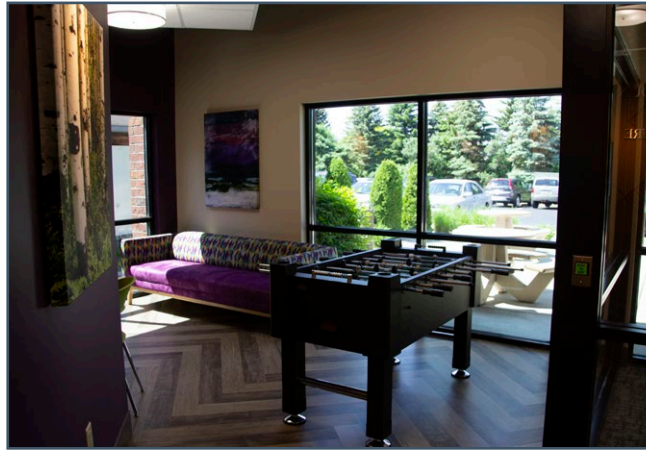
FOR LEASE

FOUNTAIN SQUARE

W177 N9856 RIVERCREST DRIVE
W177 N9886 RIVERCREST DRIVE
W178 N9912 RIVERCREST DRIVE
GERMANTOWN, WI 53022



| PROPERTY PHOTOS - INTERIOR



414.271.1111 | www.founders3.com

Information shown herein was provided by Seller/Lessor and/or third parties and has not been verified by the broker unless otherwise indicated.

FOR LEASE

FOUNTAIN SQUARE

W177 N9856 RIVERCREST DRIVE
W177 N9886 RIVERCREST DRIVE
W178 N9912 RIVERCREST DRIVE
GERMANTOWN, WI 53022



AERIAL & LOCATION



Demographics

	1 MILE	3 MILE	5 MILE
Population	5,435	36,459	63,004
AVG HH Income	\$114,745	\$112,998	\$120,983



414.271.1111 | www.founders3.com

Information shown herein was provided by Seller/Lessor and/or third parties and has not been verified by the broker unless otherwise indicated.

STATE OF WISCONSIN
BROKER DISCLOSURE

Wisconsin law requires all real estate licenses to give the following information about brokerage services to prospective customers.

Prior to negotiating on your behalf the Brokerage firm, or an agent associated with the firm, must provide you the following disclosure statement.

Disclosure to Customers

You are a customer of the brokerage firm (hereinafter Firm). The Firm is either an agent of another party in the transaction or a subagent of another firm that is the agent of another party in the transaction. A broker or a salesperson acting on behalf of the Firm may provide brokerage services to you. Whenever the Firm is providing brokerage services to you, the Firm and its brokers and salespersons (hereinafter Agents) owe you, the customer, the following duties:

- The duty to provide brokerage services to you fairly and honestly.
- The duty to exercise reasonable skill and care in providing brokerage services to you.
- The duty to provide you with accurate information about market conditions within a reasonable time if you request it, unless disclosure of the information is prohibited by law.
- The duty to disclose to you in writing certain Material Adverse Facts about a property, unless disclosure of the information is prohibited by law.
- The duty to protect your confidentiality. Unless the law requires it, the Firm and its Agents will not disclose your confidential information or the confidential information of other parties.
- The duty to safeguard trust funds and other property held by the Firm or its Agents.
- The duty, when negotiating, to present contract proposals in an objective and unbiased manner and disclose the advantages and disadvantages of the proposals.

Please review this information carefully. An Agent of the Firm can answer your questions about brokerage services, but if you need legal advice, tax advice, or a professional home inspection, contact an attorney, tax advisor, or home inspector. This disclosure is required by section 452.135 of the Wisconsin statutes and is for information only. It is a plain-language summary of the duties owed to a customer under section 452.133(1) of the Wisconsin statutes.

Confidentiality Notice to Customers

The Firm and its Agents will keep confidential any information given to the Firm or its Agents in confidence, or any information obtained by the Firm and its Agents that a reasonable person would want to be kept confidential, unless the information must be disclosed by law or you authorize the Firm to disclose particular information. The Firm and its Agents shall continue to keep the information confidential after the Firm is no longer providing brokerage services to you.

No representation is made as to the legal validity of any provision or the adequacy of any provision in any specific transaction.

The following information is required to be disclosed by law:

1. Material Adverse Facts, as defined in section 452.01(5g) of the Wisconsin Statutes (see "Definition of Adverse Facts" below).
2. Any facts known by the Firm or its Agents that contradict any information included in a written inspection report on the property or real estate is the subject of the transaction.

To ensure that the Firm and its Agents are aware of what specific information you consider confidential, you may list that information below or provide that information to the Firm or its Agents by other means. At a later time, you may also provide the Firm or its Agents with other information you consider to be confidential.

CONFIDENTIAL INFORMATION

NON-CONFIDENTIAL INFORMATION

(the following information may be disclosed to the Firm and its Agents)

(Insert information you authorize to be disclosed, such as financial qualification information.)

Definition of Material Adverse Facts

A "Material Adverse Fact" is defined in Wis. Stat. 452.01(5g) as an Adverse Fact that a party indicates is of such significance, or that is generally recognized by a competent licensee as being of such significance to a reasonable party, that it affects or would affect the party's decision to enter into a contract or agreement concerning a transaction or affects or would affect the party's decision about the terms of such a contract or agreement.

An "Adverse Fact" is defined in Wis. Stat. 452.01(1e) as a condition or occurrence that a competent licensee generally recognizes will significantly and adversely affect the value of the property, significantly reduce the structural integrity of improvements to real estate, or present a significant health risk to occupants of the property, or information that indicates that a party to a transaction is not able to or does not intend to meet his or her obligations under a contract or agreement made concerning the transaction.

Notice About Sex Offender Registry

You may obtain information about the sex offender registry and persons registered with the registry by contacting the Wisconsin Department of Corrections on the Internet at <http://www.doc.wi.gov> or by telephone at 608-240-5830.