

J.B.J. Custom Homes Presents...

The Huntington II Model

**HOME WILL
BE READY IN
AUGUST 2018!!**

The Huntington Model is very spacious at 2,406 square feet including the finished lower level.

The first floor features a large eat-in kitchen with granite countertops and tons of natural light. The Great Room features a beautiful corner gas fireplace. A powder room and separate laundry room round out the first floor.

The second floor boasts 4 bedrooms and 2 baths including a master suite with large walk-in closet.

The finished walk-out lower level has a large rec room with wet bar and a full bath.

Home will include concrete driveway and sidewalk.



\$316,900

**1544 Whitewater Drive, West Bend, WI 53095
(Lot 8 River's Edge Subdivision)**

- 4 Bedrooms
- 3.5 Bathrooms
- Large Eat-in Kitchen with Snack Bar
- Great Room with Corner Gas Fireplace
- Master Suite with Large Walk-In Closet
- Finished Walk-Out Lower Level
- Rec Room in Lower Level with Wet Bar
- First Floor Laundry Room
- MLS #1588280



J.B.J. Custom Homes

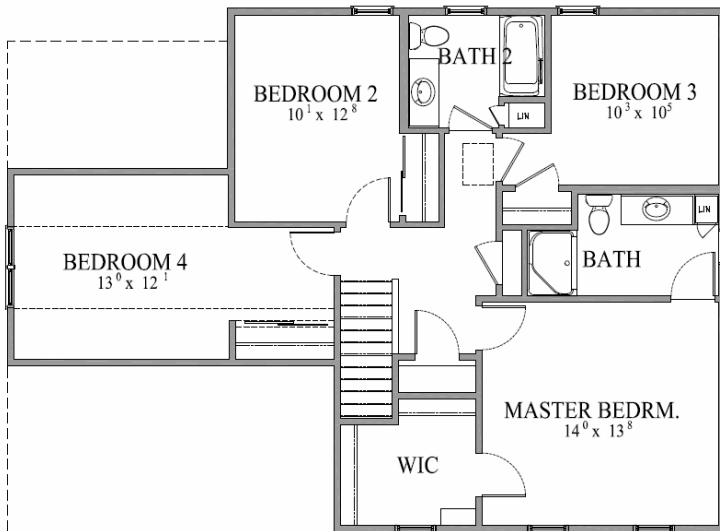
(a division of J.B.J. Companies, Inc.)

Phone: 262.255.1800

www.JBJCompanies.com

Home is currently under construction. Builder reserves the right to make changes without notice or obligation.

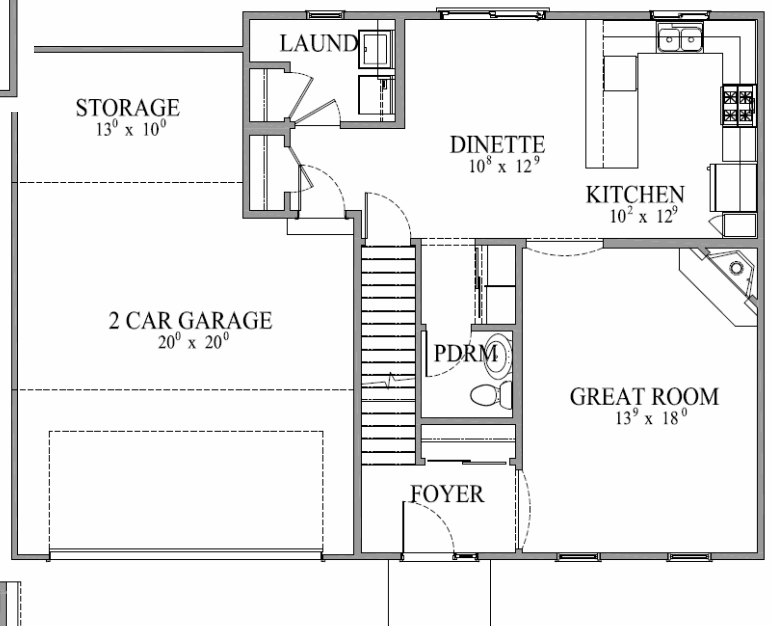
The Huntington II Model



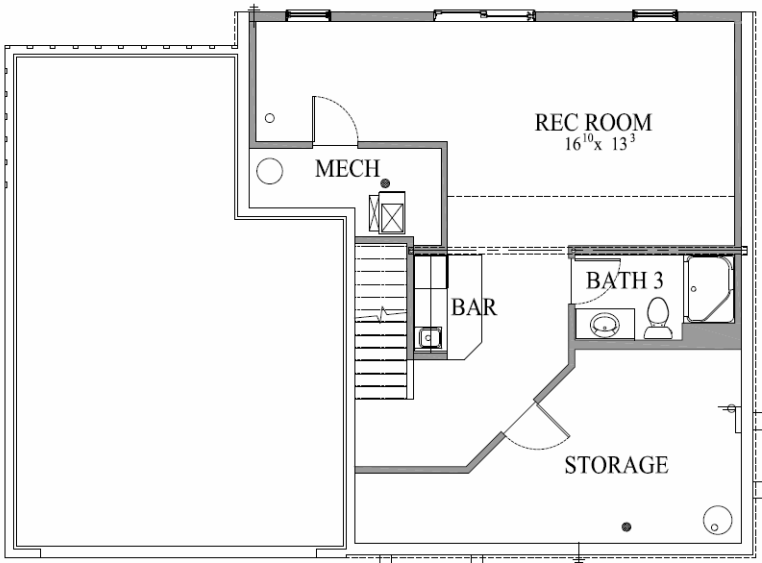
All dimensions are approximate. Builder reserves the right to make changes without notice or obligation. Features shown may not be included in base price. Ask agent for complete details regarding what is included in base price.

2,406 sq. ft.

First Floor



Finished Lower Level



J.B.J. Custom Homes

(a division of J.B.J. Companies, Inc.)

Phone: 262.255.1800

www.JBJCompanies.com

The Huntington II Model

Standard Features

Foundation

- ◆ Poured Concrete
- ◆ Steel I-Beams

Floor System

- ◆ 2x10 Floor Joist System
- ◆ 3/4" Tongue and Groove Subflooring
- ◆ 1/4" Plywood Underlayment at All Vinyl Areas
- ◆ No-wax Sheet Vinyl in Kitchen, Dinette, Foyer and Baths
- ◆ Carpeting Throughout Entire Home

Exterior

- ◆ Low Maintenance Vinyl Siding with Aluminum Trim
- ◆ Low Maintenance Vinyl Windows with Screens
- ◆ Low Maintenance Vinyl Patio Door with Screens
- ◆ 30 Year Warranty Dimensional Shingles
- ◆ Aluminum Gutter and Downspout System
- ◆ Two Frost Proof Hose Bibs
- ◆ Electric Garage Door Opener
- ◆ Insulated Overhead Garage Door

Interior

- ◆ Cabinetry Featuring Recessed Panel Doors, Concealed Hinges, with Crown Molding and Adjustable Shelves
- ◆ Granite Kitchen Countertops
- ◆ Stainless Kitchen Sink with Single Lever Pullout Faucet
- ◆ Kitchen Pantry
- ◆ Space Saver Microwave Above Range
- ◆ Dishwasher
- ◆ Garbage Disposal
- ◆ Molded Marble Tops in Baths
- ◆ One Piece Fiberglass Tubs and Showers
- ◆ Glass Shower Doors (where applicable)
- ◆ Mirrors at Each Vanity (except Powder Room)
- ◆ Wire Closet Shelving
- ◆ Dark Bronze Locksets
- ◆ Wood Sills and Apron at All Windows
- ◆ Colonial Trim
- ◆ 6 Panel Doors
- ◆ First Floor Utility Room with Closet
- ◆ Light Fixture Package
- ◆ Front Door Chime System
- ◆ Gas Fireplace
- ◆ R-50 Ceiling Insulation at Flat Ceilings

- ◆ Total R-22 Rated Composite Wall Insulation
- ◆ R-10 Foundation Insulation
- ◆ Poly Vapor Barrier at All Exterior Walls and Ceilings of Heated Space
- ◆ Water Saver Toilets
- ◆ Water Saver Shower Heads
- ◆ Insulated Entrance Door
- ◆ Fully Weather-Stripped Doors
- ◆ Energy Efficient Furnace
- ◆ Central Air Conditioning
- ◆ Energy Efficient 40 Gallon Gas Water Heater
- ◆ 220 Volt Outlets for Range and Dryers
- ◆ Bath Fans Vented to Outside
- ◆ Exterior Vent for Dryer Connection
- ◆ Basement Sump Pump

General

- ◆ 1 Year Builder Warranty
- ◆ Full Time Customer Service Department
- ◆ Personal Meetings with Builder
- ◆ Quality Control Expediting System



J.B.J. Custom Homes

(a division of J.B.J. Companies, Inc.)

Phone: 262.255.1800

www.JBJCompanies.com

Builder reserves the right to make changes without notice or obligation.