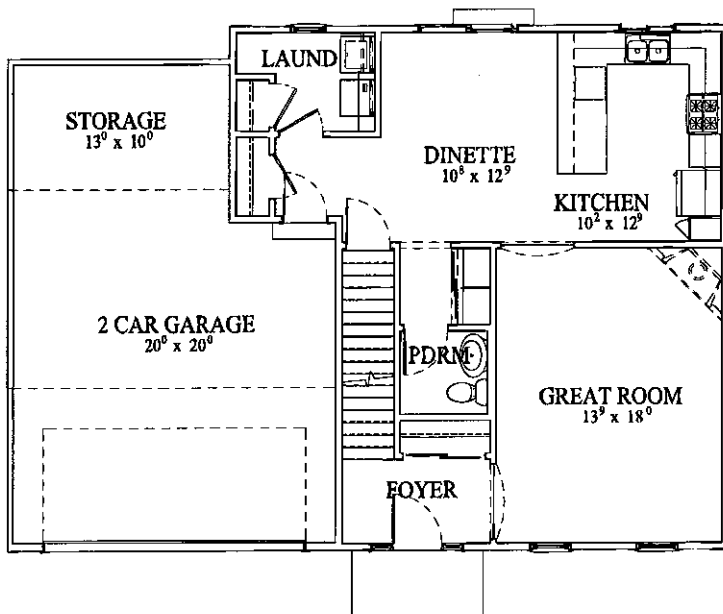


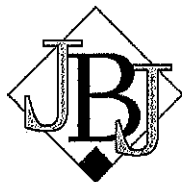
The Huntington I



1,920 Sq. Ft.

140 Reeds Drive
West Bend, WI 53095
Lot 25 River's Edge Subdivision

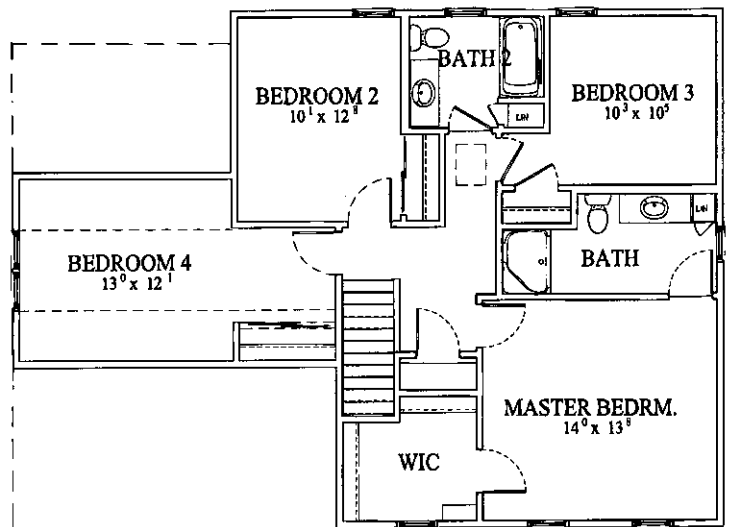
Price: \$213,900.00



J.B.J. Custom Homes
(a division of J.B.J. Companies, Inc.)

(262) 255-1800

www.JBJCompanies.com



All dimensions are approximate. Builder reserves the right to make changes without notice or obligation. Features shown may not be included in base price. See feature sheet and option sheet for list of inclusions and options.



Standard Features Included in Base Price for the Huntington I

Foundation

- ♦ Poured Concrete
- ♦ Steel I-Beams
- ♦ Vinyl Basement Windows

Floor System

- ♦ TJI Floor Joist System
- ♦ ¾" Tongue and Groove Subflooring
- ♦ ¼" Plywood Underlayment at All Vinyl Areas
- ♦ No-wax Sheet Vinyl in Kitchen, Dinette, Foyer and Baths
- ♦ Carpeting Throughout Entire Home

Exterior

- ♦ Low Maintenance Aluminum Siding with Aluminum Trim
- ♦ Low Maintenance Vinyl Windows with Screens
- ♦ Low Maintenance Vinyl Patio Door with Screens
- ♦ 30 Year Warranty Dimensional Shingles
- ♦ Aluminum Gutter and Downspout System
- ♦ Two Frost Proof Hose Bibs
- ♦ Electric Garage Door Opener
- ♦ Insulated Overhead Garage Door

Interior

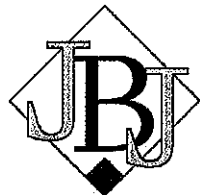
- ♦ Oak Cabinetry Featuring Recessed Panel Doors, Concealed Hinges, with Crown Molding and Adjustable Shelves
- ♦ Laminated Kitchen Counter-Tops
- ♦ Stainless Kitchen Sink with Single Lever Pullout Faucet
- ♦ Space Saver Microwave Above Range
- ♦ Dishwasher
- ♦ Garbage Disposal
- ♦ Molded Marble Tops in Baths
- ♦ One Piece Fiberglass Tubs & Showers
- ♦ Glass Shower Doors (where applicable)
- ♦ Mirrors at Each Vanity
- ♦ Master Bedroom Suite with Walk-in Closet and Private Bath
- ♦ Wire Closet Shelving
- ♦ Brushed Nickel Locksets
- ♦ Wood Sills and Apron at All Windows
- ♦ Oak Colonial Trim
- ♦ Oak Flush Doors
- ♦ First Floor Utility Room with Closet
- ♦ Light Fixture Package
- ♦ Front Door Chime System
- ♦ Gas Fireplace (optional)

Energy Saver

- ♦ R-50 Ceiling Insulation at Flat Ceilings
- ♦ Total R-22 Rated Composite Wall Insulation
- ♦ R-10 Foundation Insulation
- ♦ Poly Vapor Barrier at All Exterior Walls and Ceilings of Heated Space
- ♦ Water Saver Toilets
- ♦ Water Saver Shower Heads
- ♦ Insulated Entrance Door
- ♦ Fully Weather-Stripped Doors
- ♦ Energy Efficient Furnace
- ♦ Central Air Conditioning
- ♦ Energy Efficient 40 Gallon Gas Water Heater
- ♦ 220 Volt Outlet for Range and Dryer
- ♦ Bath Fans Vented to Outside
- ♦ Exterior Vent for Dryer Connection
- ♦ Basement Sump Pump

General

- ♦ 1 Year Builder Warranty
- ♦ Full Time Customer Service Department
- ♦ Personal Meetings with Builder
- ♦ Quality Control Expediting System



J.B.J. Custom Homes
(a division of J.B.J. Companies, Inc.)
(262) 255-1800
www.JBJCompanies.com

Builder reserves the right
to make changes without
notice or obligation.