

J.B.J. Custom Homes Presents...

The Wingate II Model

HOME WILL
BE READY IN
JUNE 2018!!

This beautiful two story home has 4 bedrooms and 2.5 baths. The first floor features a large eat-in kitchen with granite counter tops and a walk-in pantry. Great room features a beautiful corner gas fireplace. Also on the first floor is a study located just off the foyer.

The upper level has four bedrooms and two full baths. The master bedroom suite has private bath and two large walk-in closets.

The lower level has patio doors for a full walk-out that is ready to be finished.

There is an oversized 2 car attached garage. Home will include concrete driveway and sidewalk.



J.B.J. Custom Homes

(a division of J.B.J. Companies, Inc.)

Phone: 262.255.1800

www.JBJCompanies.com



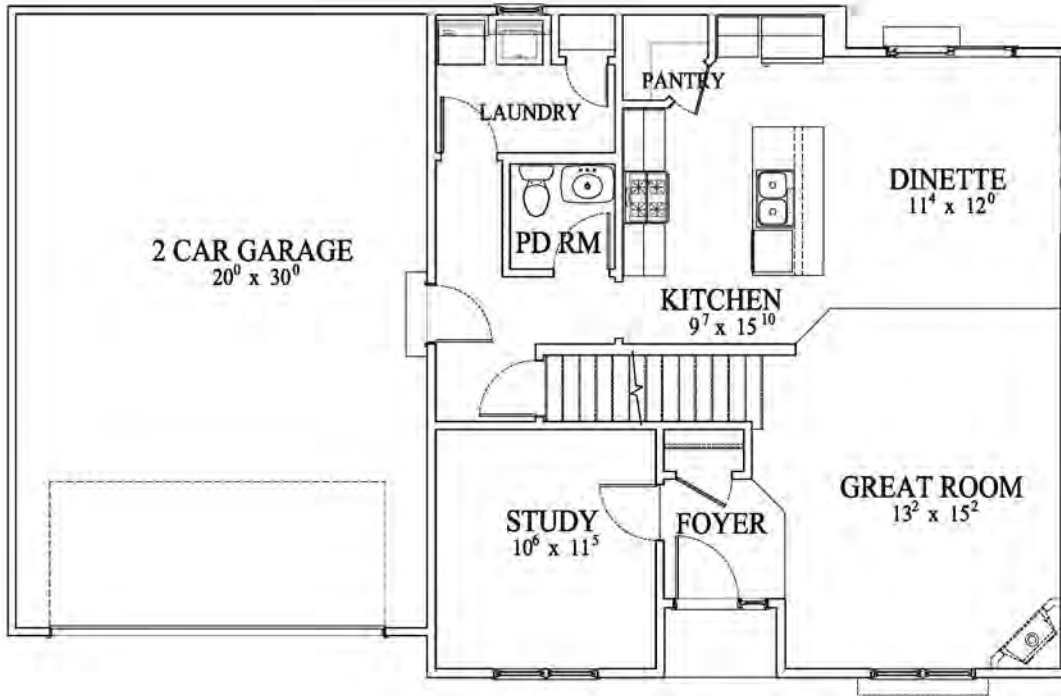
\$294,900

**1556 Whitewater Drive, West Bend, WI 53095
(Lot 10 River's Edge Subdivision)**

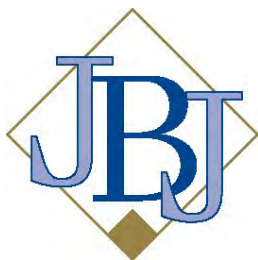
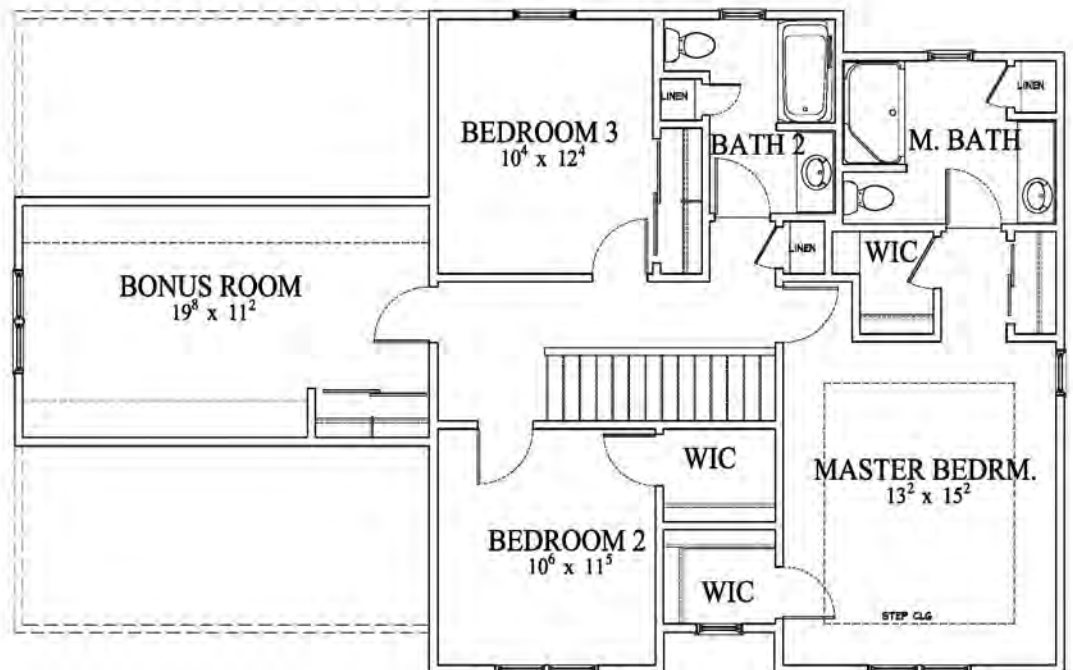
- 4 Bedrooms
- 2.5 Bathrooms
- Large Eat-in Kitchen with Snack Bar
- Walk-in Pantry
- Great Room with Gas Fireplace
- First Floor Study
- Master Suite with 2 Walk-In Closets
- Walk-Out Lower Level (unfinished)
- MLS #1582552

Home is currently under construction. Builder reserves the right to make changes without notice or obligation.

The Wingate II Model



2,096 sq. ft.



J.B.J. Custom Homes

(a division of J.B.J. Companies, Inc.)

Phone: 262.255.1800

www.JBJCompanies.com

All dimensions are approximate. Builder reserves the right to make changes without notice or obligation. Features shown may not be included in base price. Ask agent for complete details regarding what is included in base price.

The Wingate II Model

Standard Features

Foundation

- ◆ Poured Concrete
- ◆ Steel I-Beams

Floor System

- ◆ 2x10 Floor Joist System
- ◆ 3/4" Tongue and Groove Subflooring
- ◆ 1/4" Plywood Underlayment at All Vinyl Areas
- ◆ No-wax Sheet Vinyl in Kitchen, Dinette, Foyer and Baths
- ◆ Carpeting Throughout Entire Home

Exterior

- ◆ Low Maintenance Vinyl Siding with Aluminum Trim
- ◆ Low Maintenance Vinyl Windows with Screens
- ◆ Low Maintenance Vinyl Patio Door with Screens
- ◆ 30 Year Warranty Dimensional Shingles
- ◆ Aluminum Gutter and Downspout System
- ◆ Two Frost Proof Hose Bibs
- ◆ Electric Garage Door Opener
- ◆ Insulated Overhead Garage Door

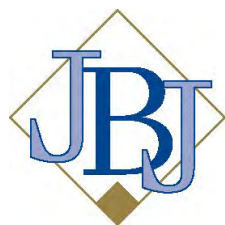
Interior

- ◆ Cabinetry Featuring Recessed Panel Doors, Concealed Hinges, with Crown Molding and Adjustable Shelves
- ◆ Granite Kitchen Countertops
- ◆ Stainless Kitchen Sink with Single Lever Pullout Faucet
- ◆ Kitchen Pantry
- ◆ Space Saver Microwave Above Range
- ◆ Dishwasher
- ◆ Garbage Disposal
- ◆ Molded Marble Tops in Baths
- ◆ One Piece Fiberglass Tubs and Showers
- ◆ Glass Shower Doors (where applicable)
- ◆ Mirrors at Each Vanity (except Powder Room)
- ◆ Wire Closet Shelving
- ◆ Dark Bronze Locksets
- ◆ Wood Sills and Apron at All Windows
- ◆ Colonial Trim
- ◆ 6 Panel Doors
- ◆ First Floor Utility Room with Closet
- ◆ Light Fixture Package
- ◆ Front Door Chime System
- ◆ Gas Fireplace
- ◆ R-50 Ceiling Insulation at Flat Ceilings

- ◆ Total R-22 Rated Composite Wall Insulation
- ◆ R-10 Foundation Insulation
- ◆ Poly Vapor Barrier at All Exterior Walls and Ceilings of Heated Space
- ◆ Water Saver Toilets
- ◆ Water Saver Shower Heads
- ◆ Insulated Entrance Door
- ◆ Fully Weather-Stripped Doors
- ◆ Energy Efficient Furnace
- ◆ Central Air Conditioning
- ◆ Energy Efficient 40 Gallon Gas Water Heater
- ◆ 220 Volt Outlets for Range and Dryers
- ◆ Bath Fans Vented to Outside
- ◆ Exterior Vent for Dryer Connection
- ◆ Basement Sump Pump

General

- ◆ 1 Year Builder Warranty
- ◆ Full Time Customer Service Department
- ◆ Personal Meetings with Builder
- ◆ Quality Control Expediting System



J.B.J. Custom Homes

(a division of J.B.J. Companies, Inc.)

Phone: 262.255.1800

www.JBJCompanies.com

Builder reserves the right to make changes without notice or obligation.