

J.B.J. Custom Homes Presents...

The Brentwood Model

**HOME WILL
BE READY IN
AUGUST 2018!!**

Check out this fabulous 2,209 square foot 4 bedroom and 3 bath ranch home with a finished walk-out lower level.

The main level features a bright eat-in kitchen with granite counter tops and large island. Great room has a beautiful corner gas fireplace with large front window. There are 3 bedrooms and 2 baths on the main level including a master suite with walk-in closet.

The finished walk-out lower level has a bedroom and full bath along with media room/rec room with wet bar.

Home will include concrete driveway and sidewalk.



\$308,900

**1550 Whitewater Drive, West Bend, WI 53095
(Lot 9 River's Edge Subdivision)**

- 4 Bedrooms
- 3 Bathrooms
- Large Eat-in Kitchen with Island
- Great Room with Corner Gas Fireplace
- Master Suite with Large Walk-In Closet
- Finished Walk-Out Lower Level
- Media Room/Rec Room in Lower Level with Wet Bar
- First Floor Laundry
- MLS #1582836



J.B.J. Custom Homes

(a division of J.B.J. Companies, Inc.)

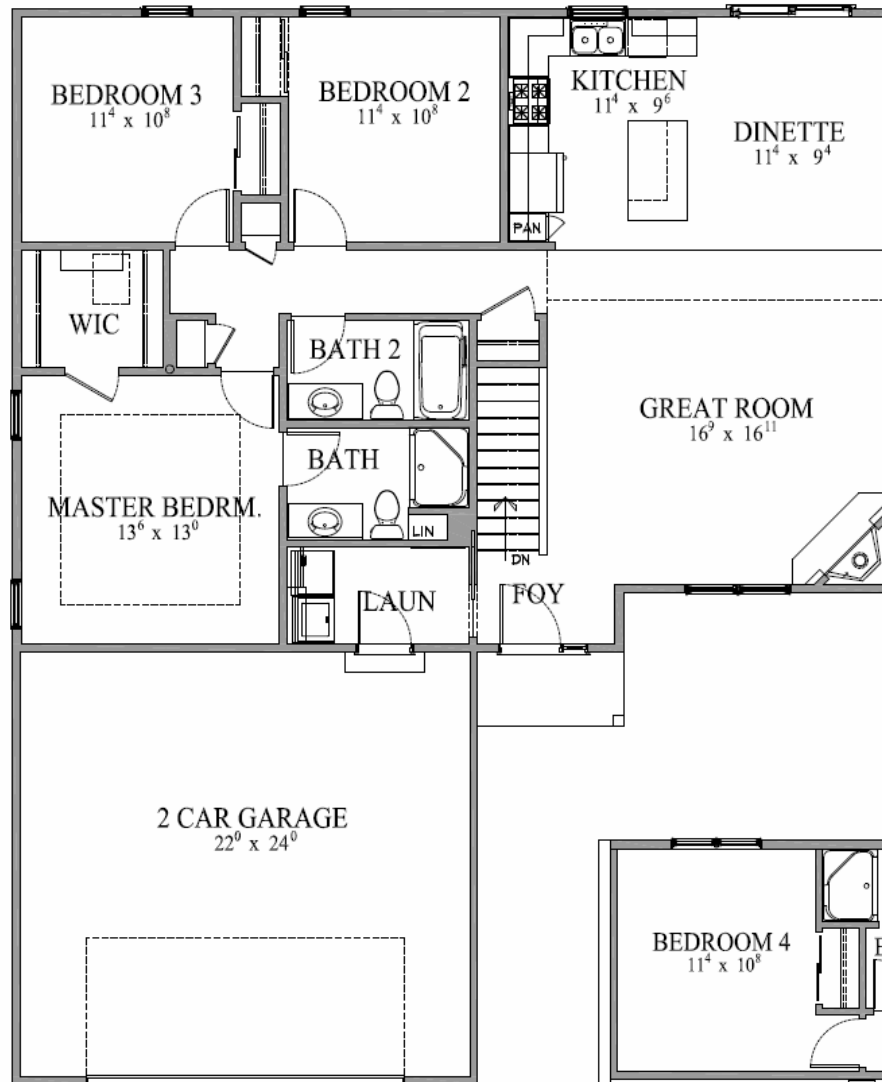
Phone: 262.255.1800

www.JBJCompanies.com

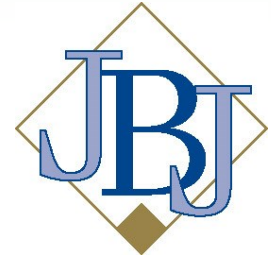
Home is currently under construction. Builder reserves the right to make changes without notice or obligation.

J.B.J. Custom Homes Presents...

The Brentwood Model



2,209 sq. ft.

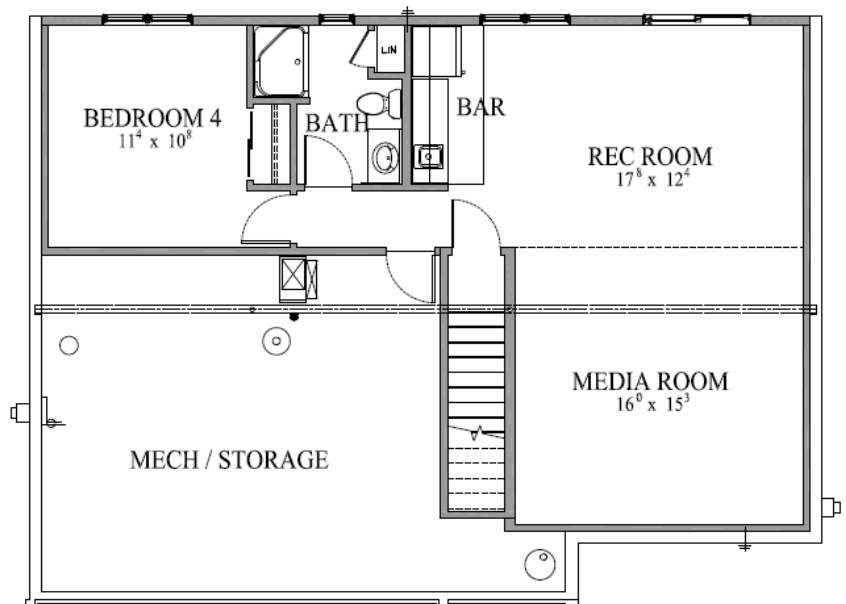


J.B.J. Custom Homes

(a division of J.B.J. Companies, Inc.)

Phone: 262.255.1800

www.JBJCompanies.com



All dimensions are approximate. Builder reserves the right to make changes without notice or obligation. Features shown may not be included in base price. Ask agent for complete details regarding what is included in base price.

The Brentwood Model

Standard Features

Foundation

- ◆ Poured Concrete
- ◆ Steel I-Beams

Floor System

- ◆ 2x10 Floor Joist System
- ◆ 3/4" Tongue and Groove Subflooring
- ◆ 1/4" Plywood Underlayment at All Vinyl Areas
- ◆ No-wax Sheet Vinyl in Kitchen, Dinette, Foyer and Baths
- ◆ Carpeting Throughout Entire Home

Exterior

- ◆ Low Maintenance Vinyl Siding with Aluminum Trim
- ◆ Low Maintenance Vinyl Windows with Screens
- ◆ Low Maintenance Vinyl Patio Door with Screens
- ◆ 30 Year Warranty Dimensional Shingles
- ◆ Aluminum Gutter and Downspout System
- ◆ Two Frost Proof Hose Bibs
- ◆ Electric Garage Door Opener
- ◆ Insulated Overhead Garage Door

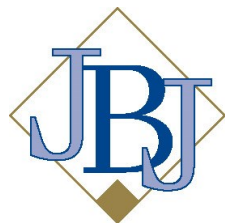
Interior

- ◆ Cabinetry Featuring Recessed Panel Doors, Concealed Hinges, with Crown Molding and Adjustable Shelves
- ◆ Granite Kitchen Countertops
- ◆ Stainless Kitchen Sink with Single Lever Pullout Faucet
- ◆ Kitchen Pantry
- ◆ Space Saver Microwave Above Range
- ◆ Dishwasher
- ◆ Garbage Disposal
- ◆ Molded Marble Tops in Baths
- ◆ One Piece Fiberglass Tubs and Showers
- ◆ Glass Shower Doors (where applicable)
- ◆ Mirrors at Each Vanity (except Powder Room)
- ◆ Wire Closet Shelving
- ◆ Dark Bronze Locksets
- ◆ Wood Sills and Apron at All Windows
- ◆ Colonial Trim
- ◆ 6 Panel Doors
- ◆ First Floor Utility Room with Closet
- ◆ Light Fixture Package
- ◆ Front Door Chime System
- ◆ Gas Fireplace
- ◆ R-50 Ceiling Insulation at Flat Ceilings

- ◆ Total R-22 Rated Composite Wall Insulation
- ◆ R-10 Foundation Insulation
- ◆ Poly Vapor Barrier at All Exterior Walls and Ceilings of Heated Space
- ◆ Water Saver Toilets
- ◆ Water Saver Shower Heads
- ◆ Insulated Entrance Door
- ◆ Fully Weather-Stripped Doors
- ◆ Energy Efficient Furnace
- ◆ Central Air Conditioning
- ◆ Energy Efficient 40 Gallon Gas Water Heater
- ◆ 220 Volt Outlets for Range and Dryers
- ◆ Bath Fans Vented to Outside
- ◆ Exterior Vent for Dryer Connection
- ◆ Basement Sump Pump

General

- ◆ 1 Year Builder Warranty
- ◆ Full Time Customer Service Department
- ◆ Personal Meetings with Builder
- ◆ Quality Control Expediting System



J.B.J. Custom Homes

(a division of J.B.J. Companies, Inc.)

Phone: 262.255.1800

www.JBJCompanies.com

Builder reserves the right to make changes without notice or obligation.