

JBJ Custom Homes Presents...

# The Stanwick Model

HOME WILL  
BE READY IN  
SEPTEMBER 2018!!

Beautiful split bedroom ranch with five bedrooms and three full baths. The open concept kitchen/dinette has granite countertops with snack bar. Great room features a beautiful corner gas fireplace and vaulted ceilings.

There are three bedrooms on the main level. The master bedroom suite has private bath and large walk-in closet.

The finished walk-out lower level has a family room with wet bar, two bedrooms and full bath.

2 car attached garage and first floor laundry.

Home will include concrete driveway and sidewalk.



**\$309,900**

**1538 Whitewater Drive, West Bend, WI 53095  
(Lot 7 River's Edge Subdivision)**

- 5 Bedrooms
- 3 Bathrooms
- Hardwood Floors (Great Room, Kitchen, Dinette)
- Large Eat-in Kitchen with Granite Countertops
- Great Room with Vaulted Ceiling and Gas Fireplace
- Master Suite with Large Walk-In Closet
- Finished Walk-Out Lower Level
- Family Room in Lower Level with Wet Bar
- First Floor Laundry Room



**JBJ Custom Homes**

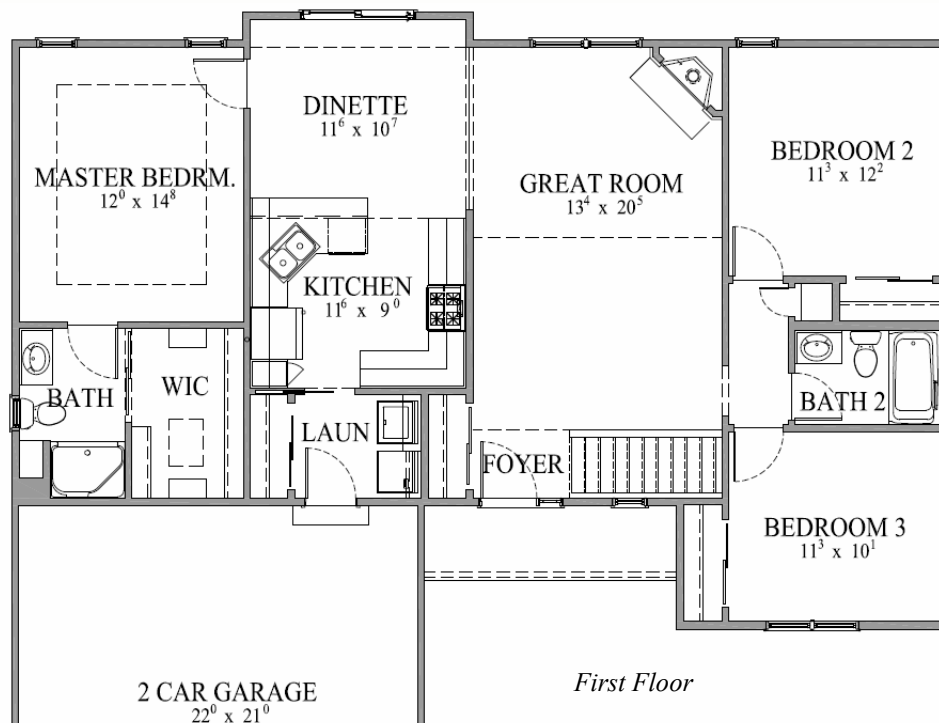
(a division of JBJ Companies, Inc.)

Phone: 262.255.1800

[www.JBJCompanies.com](http://www.JBJCompanies.com)

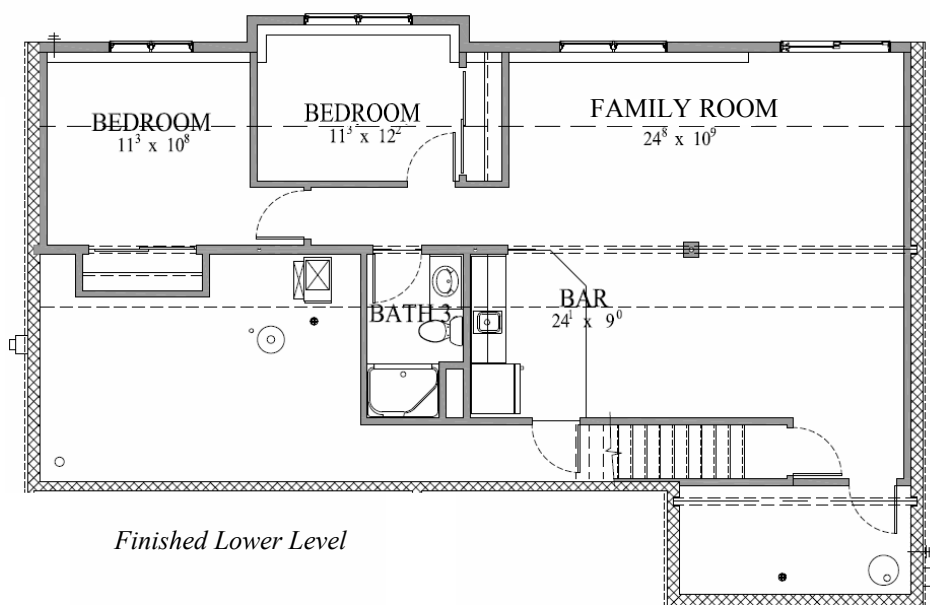
*Home is currently under construction. Builder reserves the right to make changes without notice or obligation.*

# The Stanwick Model



All dimensions are approximate. Builder reserves the right to make changes without notice or obligation. Features shown may not be included in base price. Ask agent for complete details regarding what is included in base price.

2,266 sq. ft.



**JBJ Custom Homes**

(a division of JBJ Companies, Inc.)

Phone: 262.255.1800

www.JBJCompanies.com

# The Stanwick Model

## Standard Features

### Foundation

- ◆ Poured Concrete
- ◆ Steel I-Beams

### Floor System

- ◆ 2x10 Floor Joist System
- ◆ 3/4" Tongue and Groove Subflooring
- ◆ 1/4" Plywood Underlayment at All Vinyl Areas
- ◆ No-wax Sheet Vinyl in Kitchen, Dinette, Foyer and Baths
- ◆ Carpeting Throughout Entire Home

### Exterior

- ◆ Low Maintenance Vinyl Siding with Aluminum Trim
- ◆ Low Maintenance Vinyl Windows with Screens
- ◆ Low Maintenance Vinyl Patio Door with Screens
- ◆ 30 Year Warranty Dimensional Shingles
- ◆ Aluminum Gutter and Downspout System
- ◆ Two Frost Proof Hose Bibs
- ◆ Electric Garage Door Opener
- ◆ Insulated Overhead Garage Door

### Interior

- ◆ Cabinetry Featuring Recessed Panel Doors, Concealed Hinges, with Crown Molding and Adjustable Shelves
- ◆ Granite Kitchen Countertops
- ◆ Stainless Kitchen Sink with Single Lever Pullout Faucet
- ◆ Kitchen Pantry
- ◆ Space Saver Microwave Above Range
- ◆ Dishwasher
- ◆ Garbage Disposal
- ◆ Molded Marble Tops in Baths
- ◆ One Piece Fiberglass Tubs and Showers
- ◆ Glass Shower Doors (where applicable)
- ◆ Mirrors at Each Vanity (except Powder Room)
- ◆ Wire Closet Shelving
- ◆ Dark Bronze Locksets
- ◆ Wood Sills and Apron at All Windows
- ◆ Colonial Trim
- ◆ 6 Panel Doors
- ◆ First Floor Utility Room with Closet
- ◆ Light Fixture Package
- ◆ Front Door Chime System
- ◆ Gas Fireplace
- ◆ R-50 Ceiling Insulation at Flat Ceilings

- ◆ Total R-22 Rated Composite Wall Insulation
- ◆ R-10 Foundation Insulation
- ◆ Poly Vapor Barrier at All Exterior Walls and Ceilings of Heated Space
- ◆ Water Saver Toilets
- ◆ Water Saver Shower Heads
- ◆ Insulated Entrance Door
- ◆ Fully Weather-Stripped Doors
- ◆ Energy Efficient Furnace
- ◆ Central Air Conditioning
- ◆ Energy Efficient 40 Gallon Gas Water Heater
- ◆ 220 Volt Outlets for Range and Dryers
- ◆ Bath Fans Vented to Outside
- ◆ Exterior Vent for Dryer Connection
- ◆ Basement Sump Pump

### General

- ◆ 1 Year Builder Warranty
- ◆ Full Time Customer Service Department
- ◆ Personal Meetings with Builder
- ◆ Quality Control Expediting System



**JBJ Custom Homes**

(a division of JBJ Companies, Inc.)

Phone: 262.255.1800

[www.JBJCompanies.com](http://www.JBJCompanies.com)

*Builder reserves the right to make changes without notice or obligation.*