

JBJ Custom Homes Presents...

The Hawksbury III Model

HOME WILL
BE READY IN
OCTOBER 2018!!

Spacious four bedroom and three full bath home will be ready to move in this fall. The first floor features an open concept great room with hard floors, gas fireplace, eat-in kitchen with center island and granite countertops.

There are three bedrooms on the second floor including a master bedroom suite with private bath and two large walk-in closets. A tech room/office is conveniently located on the second floor as well.

The finished walk-out lower level has a rec room with wet bar, bedroom and full bath.

2.5 car attached garage and first floor laundry.

Home will include concrete driveway and sidewalk.



\$314,900

**1532 Whitewater Drive, West Bend, WI 53095
(Lot 6 River's Edge Subdivision)**

- 4 Bedrooms
- 3.5 Bathrooms
- Hardwood Floors on First Floor
- Large Eat-in Kitchen with Center Island and Granite Countertops
- Great Room with Vaulted Ceiling and Gas Fireplace
- Master Suite with 2 Large Walk-In Closet
- Finished Walk-Out Lower Level
- Rec Room in Lower Level with Wet Bar
- First Floor Laundry Room

Home is currently under construction. Builder reserves the right to make changes without notice or obligation.



JBJ Custom Homes

(a division of JBJ Companies, Inc.)

Phone: 262.255.1800

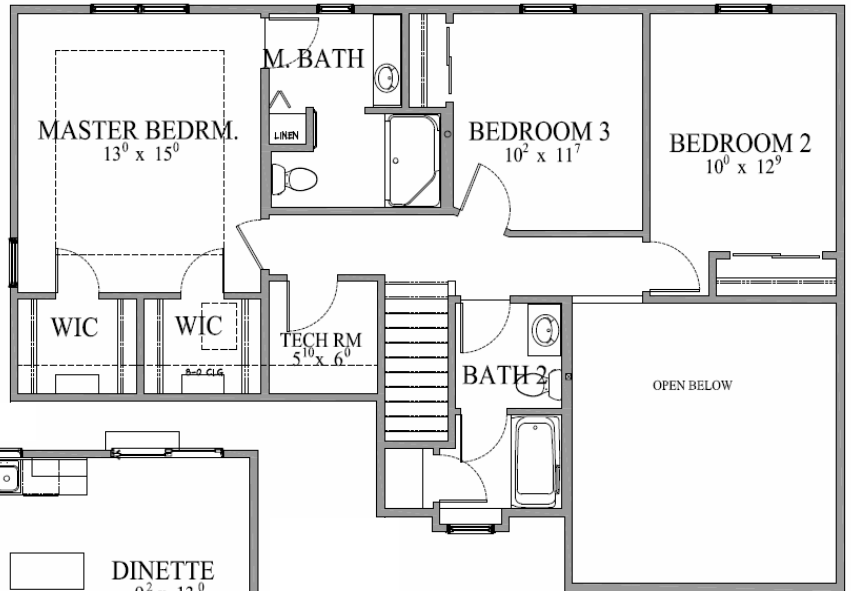
www.JBJCompanies.com

JBJ Custom Homes Presents...

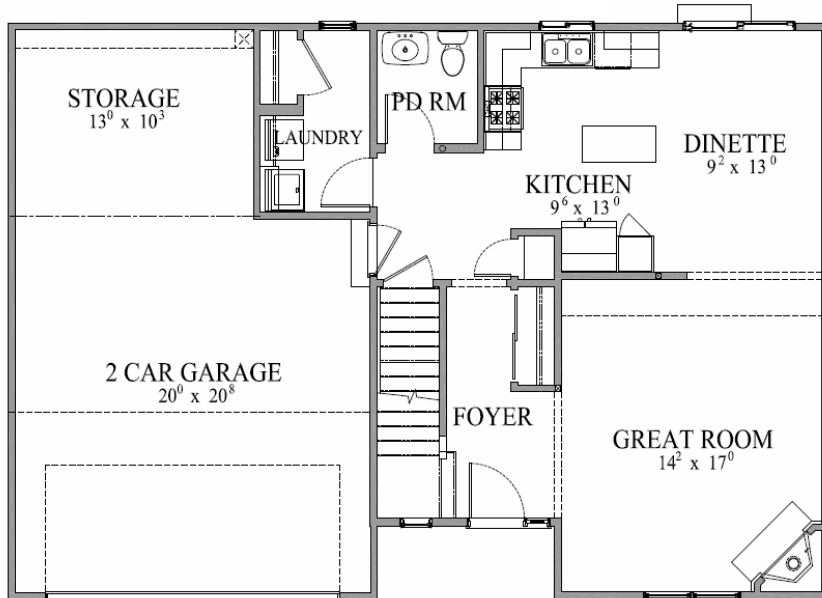
The Hawksbury III Model

2,249 sq. ft.

Second Floor

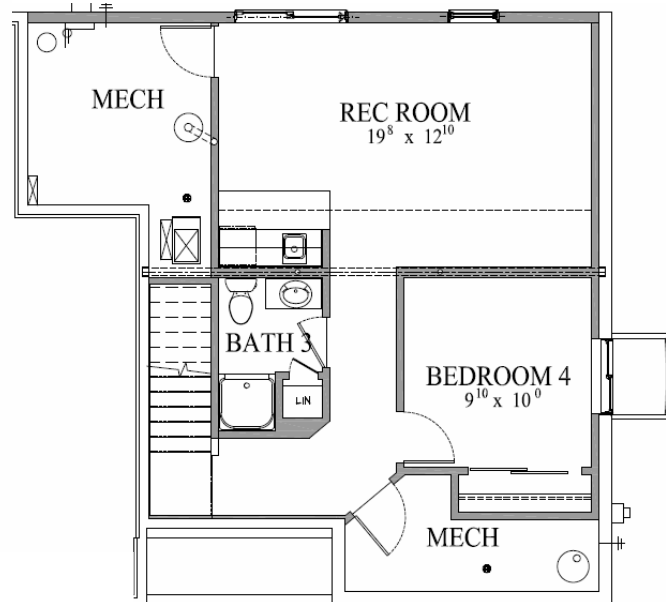


First Floor



All dimensions are approximate. Builder reserves the right to make changes without notice or obligation. Features shown may not be included in base price. Ask agent for complete details regarding what is included in base price.

Finished Lower Level



JBJ Custom Homes

(a division of JBJ Companies, Inc.)

Phone: 262.255.1800

www.JBJCompanies.com

The Hawksbury III Model

Standard Features

Foundation

- ◆ Poured Concrete
- ◆ Steel I-Beams

Floor System

- ◆ 2x10 Floor Joist System
- ◆ 3/4" Tongue and Groove Subflooring
- ◆ 1/4" Plywood Underlayment at All Vinyl Areas
- ◆ No-wax Sheet Vinyl in Kitchen, Dinette, Foyer and Baths
- ◆ Carpeting Throughout Entire Home

Exterior

- ◆ Low Maintenance Vinyl Siding with Aluminum Trim
- ◆ Low Maintenance Vinyl Windows with Screens
- ◆ Low Maintenance Vinyl Patio Door with Screens
- ◆ 30 Year Warranty Dimensional Shingles
- ◆ Aluminum Gutter and Downspout System
- ◆ Two Frost Proof Hose Bibs
- ◆ Electric Garage Door Opener
- ◆ Insulated Overhead Garage Door

Interior

- ◆ Cabinetry Featuring Recessed Panel Doors, Concealed Hinges, with Crown Molding and Adjustable Shelves
- ◆ Granite Kitchen Countertops
- ◆ Stainless Kitchen Sink with Single Lever Pullout Faucet
- ◆ Kitchen Pantry
- ◆ Space Saver Microwave Above Range
- ◆ Dishwasher
- ◆ Garbage Disposal
- ◆ Molded Marble Tops in Baths
- ◆ One Piece Fiberglass Tubs and Showers
- ◆ Glass Shower Doors (where applicable)
- ◆ Mirrors at Each Vanity (except Powder Room)
- ◆ Wire Closet Shelving
- ◆ Dark Bronze Locksets
- ◆ Wood Sills and Apron at All Windows
- ◆ Colonial Trim
- ◆ 6 Panel Doors
- ◆ First Floor Utility Room with Closet
- ◆ Light Fixture Package
- ◆ Front Door Chime System
- ◆ Gas Fireplace
- ◆ R-50 Ceiling Insulation at Flat Ceilings

- ◆ Total R-22 Rated Composite Wall Insulation
- ◆ R-10 Foundation Insulation
- ◆ Poly Vapor Barrier at All Exterior Walls and Ceilings of Heated Space
- ◆ Water Saver Toilets
- ◆ Water Saver Shower Heads
- ◆ Insulated Entrance Door
- ◆ Fully Weather-Stripped Doors
- ◆ Energy Efficient Furnace
- ◆ Central Air Conditioning
- ◆ Energy Efficient 40 Gallon Gas Water Heater
- ◆ 220 Volt Outlets for Range and Dryers
- ◆ Bath Fans Vented to Outside
- ◆ Exterior Vent for Dryer Connection
- ◆ Basement Sump Pump

General

- ◆ 1 Year Builder Warranty
- ◆ Full Time Customer Service Department
- ◆ Personal Meetings with Builder
- ◆ Quality Control Expediting System



JBJ Custom Homes

(a division of JBJ Companies, Inc.)

Phone: 262.255.1800

www.JBJCompanies.com

Builder reserves the right to make changes without notice or obligation.