

J.B.J. Custom Homes

Presents...

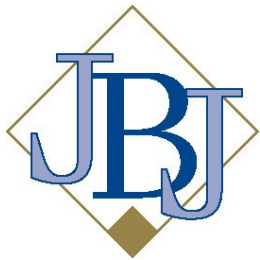
The Lancaster Model

New Construction!!

This 2-story home has an open concept kitchen with large walk-in pantry and dinette with patio doors to the back yard. Great room features vaulted ceiling, corner gas fireplace, and large window for natural light. A private office/den rounds out the first floor.

Second floor features 4 bedrooms and 2 full baths. Master Bedroom suite has private bath and walk-in closet.

The 2.5 car garage has extra bonus space for additional storage.



J.B.J. Custom Homes

(a division of J.B.J. Companies, Inc.)

Phone: 262.255.1800

www.JBJCompanies.com



\$279,900

**134 Reeds Drive, West Bend, WI 53095
(Lot 26 River's Edge Subdivision)**



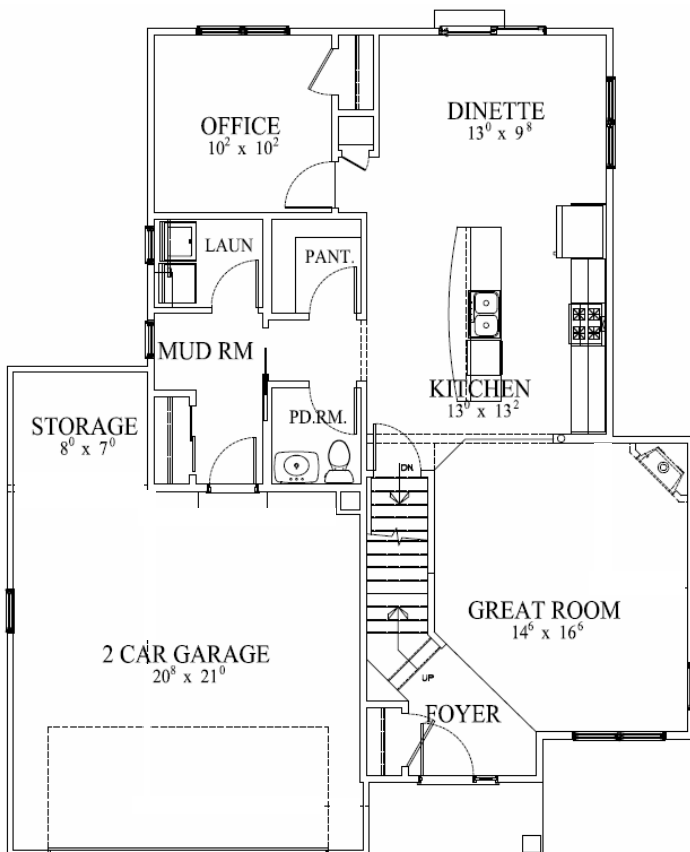
- 4 Bedrooms
- 2.5 Bathrooms
- Open Concept Kitchen
- Walk-In Pantry
- Great Room with Vaulted Ceiling
- First Floor Office
- Master Suite with Walk-In Closet
- MLS #1535928

Home is currently under construction. Photos are a representation of the home to be built. Builder reserves the right to make changes without notice or obligation.

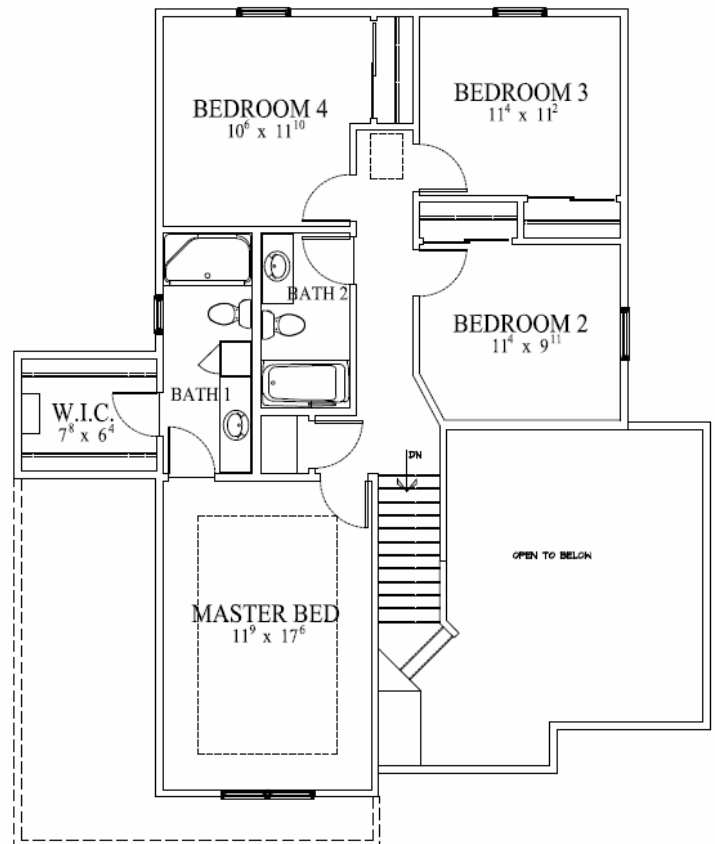
J.B.J. Custom Homes

Presents...

The Lancaster Model



1,980 sq. ft.



J.B.J. Custom Homes

(a division of J.B.J. Companies, Inc.)

Phone: 262.255.1800

www.JBJCompanies.com

All dimensions are approximate. Builder reserves the right to make changes without notice or obligation. Features shown may not be included in base price. Ask agent for complete details regarding what is included in base price.

The Lancaster Model

Standard Features

Foundation

- ◆ Poured Concrete
- ◆ Steel I-Beams
- ◆ Vinyl Basement Windows

Floor System

- ◆ 2x10 Floor Joist System
- ◆ 3/4" Tongue and Groove Subflooring
- ◆ 1/4" Plywood Underlayment at All Vinyl Areas
- ◆ No-wax Sheet Vinyl in Kitchen, Dinette, Foyer and Baths
- ◆ Carpeting Throughout Entire Home

Exterior

- ◆ Low Maintenance Aluminum Siding with Aluminum Trim
- ◆ Low Maintenance Vinyl Windows with Screens
- ◆ Low Maintenance Vinyl Patio Door with Screens
- ◆ 30 Year Warranty Dimensional Shingles
- ◆ Aluminum Gutter and Downspout System
- ◆ Two Frost Proof Hose Bibs
- ◆ Electric Garage Door Opener
- ◆ Insulated Overhead Garage Door

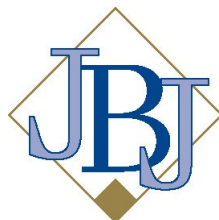
Interior

- ◆ Cabinetry Featuring Recessed Panel Doors, Concealed Hinges, with Crown Molding and Adjustable Shelves
- ◆ Granite Kitchen Countertops
- ◆ Stainless Kitchen Sink with Single Lever Pullout Faucet
- ◆ Kitchen Pantry
- ◆ Space Saver Microwave Above Range
- ◆ Dishwasher
- ◆ Garbage Disposal
- ◆ Molded Marble Tops in Baths
- ◆ One Piece Fiberglass Tubs and Showers
- ◆ Glass Shower Doors (where applicable)
- ◆ Mirrors at Each Vanity (except Powder Room)
- ◆ Wire Closet Shelving
- ◆ Dark Bronze Locksets
- ◆ Wood Sills and Apron at All Windows
- ◆ Colonial Trim
- ◆ 6 Panel Doors
- ◆ First Floor Utility Room with Closet
- ◆ Light Fixture Package
- ◆ Front Door Chime System
- ◆ Gas Fireplace
- ◆ R-50 Ceiling Insulation at Flat Ceilings

- ◆ Total R-22 Rated Composite Wall Insulation
- ◆ R-10 Foundation Insulation
- ◆ Poly Vapor Barrier at All Exterior Walls and Ceilings of Heated Space
- ◆ Water Saver Toilets
- ◆ Water Saver Shower Heads
- ◆ Insulated Entrance Door
- ◆ Fully Weather-Stripped Doors
- ◆ Energy Efficient Furnace
- ◆ Central Air Conditioning
- ◆ Energy Efficient 40 Gallon Gas Water Heater
- ◆ 220 Volt Outlets for Range and Dryers
- ◆ Bath Fans Vented to Outside
- ◆ Exterior Vent for Dryer Connection
- ◆ Basement Sump Pump

General

- ◆ 1 Year Builder Warranty
- ◆ Full Time Customer Service Department
- ◆ Personal Meetings with Builder
- ◆ Quality Control Expediting System



J.B.J. Custom Homes

(a division of J.B.J. Companies, Inc.)

Phone: 262.255.1800

www.JBJCompanies.com

Builder reserves the right to make changes without notice or obligation.